

Juristic Name : FUJITRANS (THAILAND) COMPANY LIMITED

Registered No: 0105539076051

Data As of 3 Jun 25

Export

Excel

Print Screen

Select Fiscal Y

2024

Financial Position

Income Statement

Financial Ratios

Compare with

Yearly

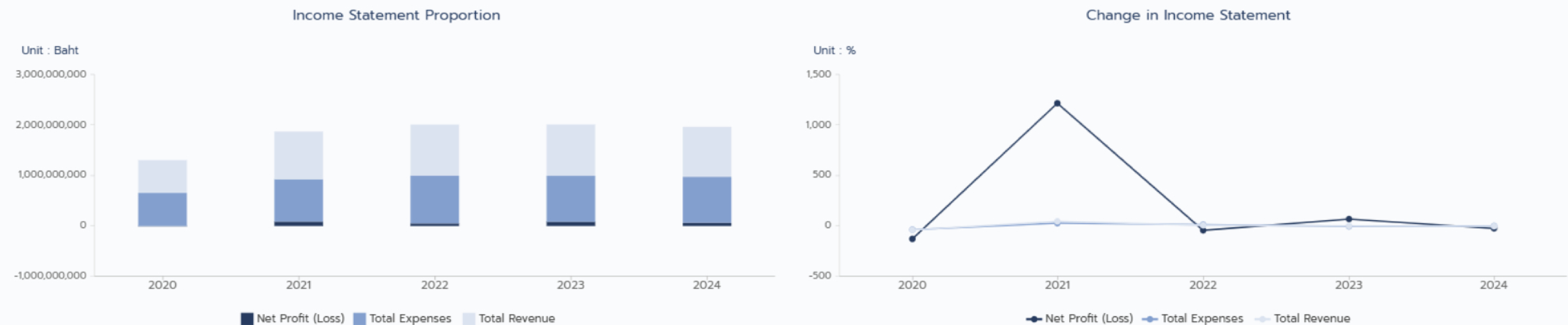
Industry

Income Statement for the year 2020 - 2024

Unit : Baht	2020		2021		2022		2023		2024	
	Amount	%Change	Amount	%Change	Amount	%Change	Amount	%Change	Amount	%Change
Revenue from Sales&Services	635,830,355.07	-39.24	903,589,035.34	42.11	988,236,538.99	9.36	989,436,165.35	0.12	956,289,566.90	-3.35
Total Revenue	649,291,139.43	-39.51	948,297,858.59	46.05	1,013,800,773.22	6.90	1,017,441,585.90	0.35	990,689,584.98	-2.62
Cost of Goods Sold	605,817,909.69	-37.78	795,375,374.34	31.28	884,035,251.42	11.14	861,815,360.22	-2.51	861,449,890.13	-0.04
Gross Profit (Loss)	-	0.00	-	0.00	-	0.00	-	0.00	94,839,676.77	0.00
Selling&Admin Expenses	51,341,375.62	-17.55	44,037,743.26	-14.22	65,021,460.21	47.64	52,150,605.86	-19.79	51,750,577.28	-0.76
Total Expenses	657,159,285.31	-36.57	839,413,117.60	27.73	949,056,711.63	13.06	913,965,966.08	-3.69	913,200,467.41	-0.08
Interest Expenses	0.00	0.00	0.00	0.00	-	0.00	-	0.00	0.00	0.00
Profit(Loss) before Income Tax	-7,868,145.88	-121.08	108,884,740.99	1,483.86	64,744,061.59	-40.53	103,475,619.82	59.82	77,489,117.57	-25.11
Income Tax Expense	0.00	-100.00	20,942,574.04	0.00	14,601,577.83	-30.27	19,055,495.89	30.50	13,521,482.20	-29.04
Net Profit (Loss)	-7,868,145.88	-128.41	87,942,166.95	1,217.69	50,142,483.76	-42.98	84,420,123.93	68.36	63,967,635.37	-24.22

- Remark(s) :
1. This statement includes only important accounts.
 2. % Change is a year-over-year change of the current fiscal year and the previous fiscal year amount.
 3. The accounts showing in the statement depend on the accounting format submitted.

Income Statement Proportion Chart for the year 2020 - 2024



Juristic Name : FUJITRANS (THAILAND) COMPANY LIMITED

Registered No: 0105539076051

Data As of 3 Jun 25

Export

Excel

Print Screen

Select Fiscal Year

2024

Financial Position

Income Statement

Financial Ratios

Compare with

Yearly

Industry

Statement of Financial Position for the year 2020 - 2024

Unit : Baht	2020		2021		2022		2023		2024	
	Amount	%Change	Amount	%Change	Amount	%Change	Amount	%Change	Amount	%Change
Accounts Receivable	234,408,445.02	-11.33	249,152,962.23	6.29	201,101,208.60	-19.28	246,936,185.81	22.79	242,707,868.93	-1.71
Inventories	2,340,983.67	-11.90	5,022,421.28	114.54	4,169,966.92	-16.97	3,285,922.75	-21.20	6,330,254.29	92.64
Total Current Assets	741,263,268.32	-3.74	653,796,543.99	-11.79	709,221,660.41	8.47	838,489,520.70	18.22	948,566,836.17	13.12
Property, Plant and Equipment	19,991,047.49	-16.94	26,460,891.86	32.36	34,370,231.61	29.89	40,721,144.38	18.47	57,426,644.35	41.02
Total Non-current Assets	569,078,321.69	-0.61	785,621,184.08	38.05	775,556,977.43	-1.28	752,800,617.99	-2.93	741,621,287.37	-1.48
Total Assets	1,310,341,590.01	-2.41	1,439,417,728.07	9.85	1,484,778,637.84	3.15	1,591,290,138.69	7.17	1,690,188,123.54	6.21
Total Current Liabilities	80,831,335.68	-21.20	123,351,068.28	52.60	120,833,740.94	-2.04	142,657,728.96	18.06	180,000,517.28	26.17
Total Non-current Liabilities	17,891,286.90	-13.30	16,505,525.41	-7.74	14,241,278.76	-13.71	14,508,667.66	1.87	12,096,228.82	-16.62
Total Liabilities	98,722,622.58	-19.88	139,856,593.69	41.66	135,075,019.70	-3.41	157,166,396.62	16.35	192,096,746.10	22.22
Equity	1,211,618,967.43	-0.64	1,299,561,134.38	7.25	1,349,703,618.14	3.85	1,434,123,742.07	6.25	1,498,091,377.44	4.46
Total Liabilities and Equity	1,310,341,590.01	-2.41	1,439,417,728.07	9.85	1,484,778,637.84	3.15	1,591,290,138.69	7.17	1,690,188,123.54	6.21

- Remark(s) :
1. This statement includes only important accounts.
 2. % Change is a year-over-year change of the current fiscal year and the previous fiscal year amount.
 3. The accounts showing in the statement depend on the accounting format submitted.

Statement of Financial Position Chart for the year 2020 - 2024

Balance Sheet Proportion



Change in Balance Sheet

