

Juristic Name : THAI TRANS INTERNATIONAL CO.,LTD.

Registered No: 0105553092841

Data As of 3 Jun 25

Export

Excel

Print Screen

Select Fiscal Y

2024

Financial Position

Income Statement

Financial Ratios

Compare with

Yearly

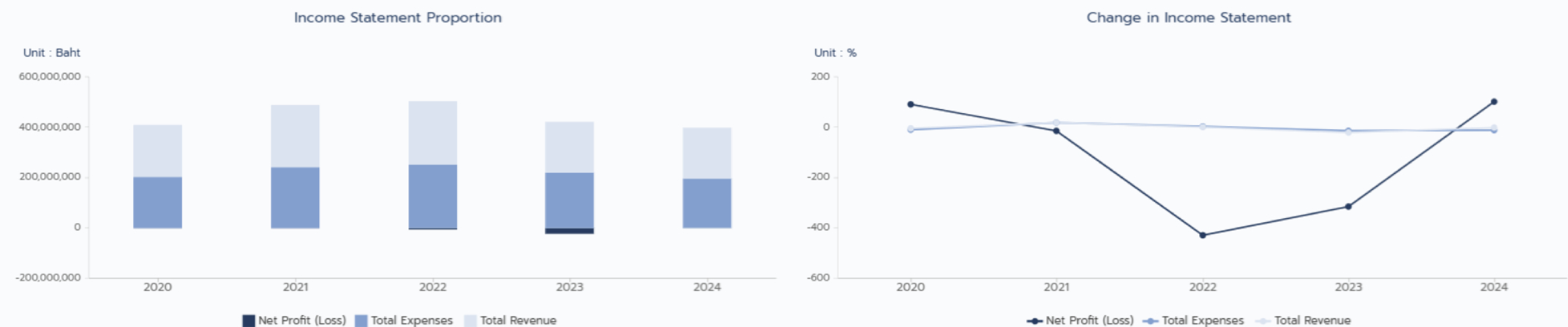
Industry

Income Statement for the year 2020 - 2024

Unit : Baht	2020		2021		2022		2023		2024	
	Amount	%Change	Amount	%Change	Amount	%Change	Amount	%Change	Amount	%Change
Revenue from Sales&Services	206,791,230.00	-3.27	246,249,075.00	19.08	246,916,302.00	0.27	200,615,181.00	-18.75	201,715,215.00	0.54
Total Revenue	206,836,577.08	-3.25	246,664,630.75	19.25	251,674,125.39	2.03	201,896,849.70	-19.77	201,813,994.44	-0.04
Cost of Goods Sold	186,102,233.59	-9.65	224,821,015.77	20.80	235,168,141.69	4.60	203,343,594.17	-13.53	182,381,305.97	-10.30
Gross Profit (Loss)	-	0.00	-	0.00	-	0.00	-	0.00	19,333,909.03	0.00
Selling&Admin Expenses	17,348,039.86	0.71	17,934,012.22	3.37	18,107,994.18	0.97	17,457,507.81	-3.59	14,686,324.24	-15.87
Total Expenses	203,450,273.45	-8.85	242,755,027.99	19.31	253,276,135.87	4.33	220,801,101.98	-12.82	197,067,630.21	-10.74
Interest Expenses	3,966,981.64	72.89	4,845,879.54	22.15	3,906,679.40	-19.38	3,921,948.52	0.39	4,148,363.74	5.77
Profit(Loss) before Income Tax	-580,678.01	95.03	-936,276.78	-61.23	-5,508,689.88	-488.36	-22,826,200.80	-314.36	598,000.49	102.61
Income Tax Expense	340,175.94	0.00	106,016.15	-68.83	0.00	-100.00	0.00	0.00	0.00	0.00
Net Profit (Loss)	-920,853.95	92.12	-1,042,292.93	-13.18	-5,508,689.88	-428.51	-22,826,200.80	-314.36	598,000.49	102.61

- Remark(s) :
1. This statement includes only important accounts.
  2. % Change is a year-over-year change of the current fiscal year and the previous fiscal year amount.
  3. The accounts showing in the statement depend on the accounting format submitted.

Income Statement Proportion Chart for the year 2020 - 2024



Juristic Name : THAI TRANS INTERNATIONAL CO.,LTD.

Registered No: 0105553092841

Data As of 3 Jun 25

Export

Excel

Print Screen

Select Fiscal Year

2024

Financial Position

Income Statement

Financial Ratios

Compare with

Yearly

Industry

Statement of Financial Position for the year 2020 - 2024

Unit : Baht	2020		2021		2022		2023		2024	
	Amount	%Change	Amount	%Change	Amount	%Change	Amount	%Change	Amount	%Change
Accounts Receivable	46,528,234.55	12.72	41,924,771.61	-9.89	43,121,785.82	2.85	29,012,362.06	-32.71	34,031,656.83	17.30
Inventories	-	0.00	-	0.00	-	0.00	-	0.00	0.00	0.00
Total Current Assets	69,722,826.48	2.99	51,070,977.96	-26.75	50,434,584.09	-1.24	39,660,961.56	-21.36	35,085,515.92	-11.53
Property, Plant and Equipment	14,164,741.01	53.92	12,008,961.62	-15.21	7,795,694.49	-35.08	4,833,609.39	-37.99	2,518,777.96	-47.89
Total Non-current Assets	15,494,676.85	47.54	14,044,637.18	-9.35	9,819,375.32	-30.08	6,849,064.82	-30.24	4,546,260.89	-33.62
Total Assets	85,217,503.33	8.98	65,115,615.14	-23.58	60,253,959.41	-7.46	46,510,026.38	-22.81	39,631,776.81	-14.78
Total Current Liabilities	98,137,192.87	5.15	89,031,593.06	-9.27	90,784,356.59	1.96	92,593,667.57	1.99	87,769,317.75	-5.21
Total Non-current Liabilities	35,679,835.92	9.61	25,725,840.47	-27.89	24,620,111.09	-4.29	31,893,067.88	29.54	29,241,167.64	-8.31
Total Liabilities	133,817,028.79	6.31	114,757,433.53	-14.24	115,404,467.68	0.56	124,486,735.45	7.86	117,010,485.39	-6.00
Equity	-48,599,525.46	-1.93	-49,641,818.39	-2.14	-55,150,508.27	-11.09	-77,976,709.07	-41.38	-77,378,708.58	0.76
Total Liabilities and Equity	85,217,503.33	8.98	65,115,615.14	-23.58	60,253,959.41	-7.46	46,510,026.38	-22.81	39,631,776.81	-14.78

- Remark(s) :
1. This statement includes only important accounts.
  2. % Change is a year-over-year change of the current fiscal year and the previous fiscal year amount.
  3. The accounts showing in the statement depend on the accounting format submitted.

Statement of Financial Position Chart for the year 2020 - 2024

Balance Sheet Proportion



Change in Balance Sheet

