



Careers



Explore US-based careers

Explore jobs globally

Business Development, Strategy & Planning

Engineering & Technology

Finance & Accounting

Intelligence

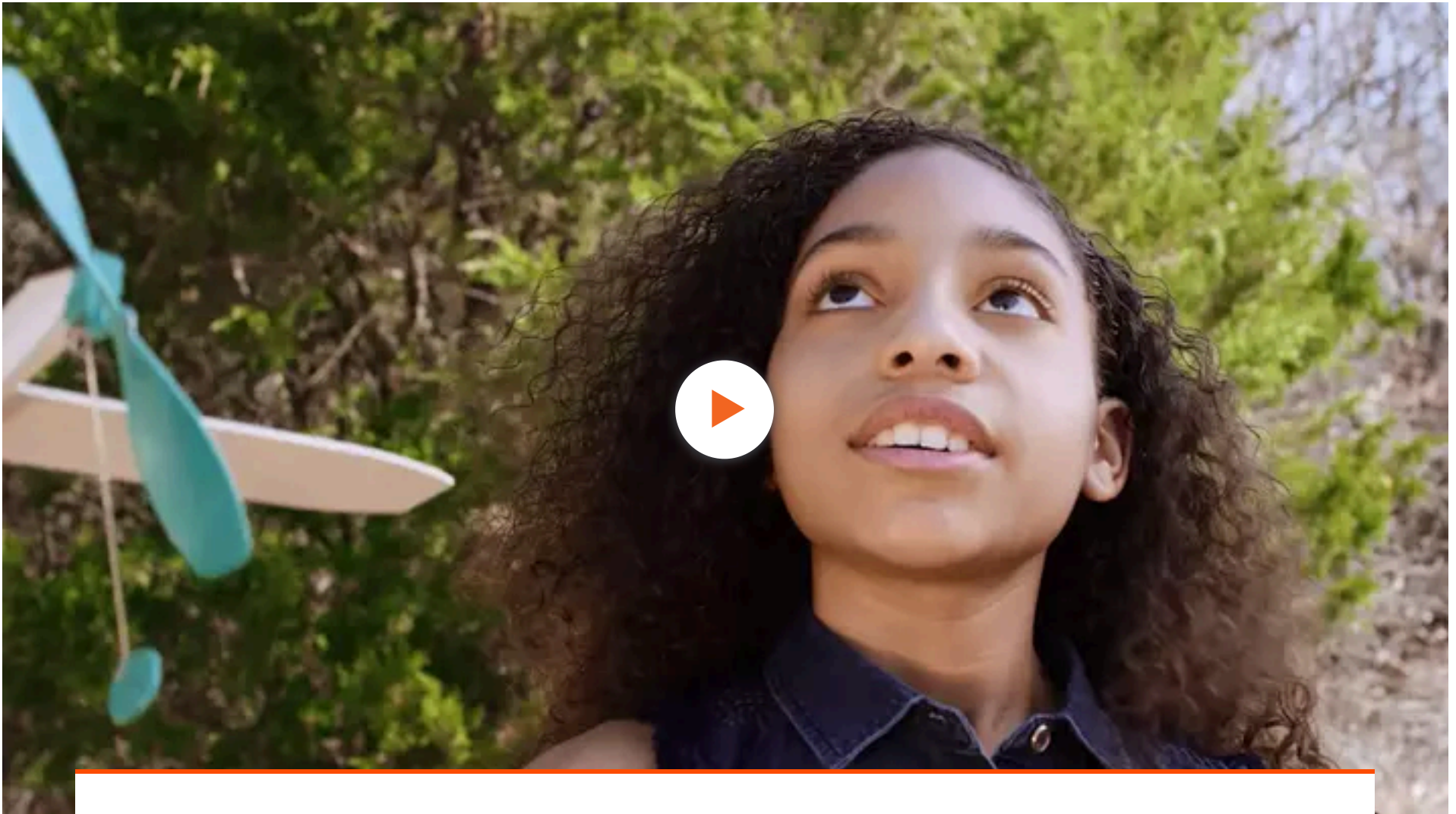
Manufacturing & Maintenance

Other Professionals

Project & Program Management

Supply Chain & Logistics

land, space and naval forces, as well as advanced electronics, security, information technology solutions and customer support services.



The Edge Inside: Innovation and Inspiration



Headquartered in Falls Church, Virginia, BAE Systems, Inc. employs nearly 41,000 across its major operations in the United States, United Kingdom, and Sweden, and generated 2023 sales of \$13.6 billion. We deliver products and services for air, land, sea and space, as well as advanced electronics, mission systems, intelligence, security, and IT solutions and support services. Our dedication shows in everything we design, produce and deliver — to protect those who protect us in a high-performance, innovative culture. We push the limits of possibility to provide a vital advantage to support our customers in achieving their missions.

BAE Systems, Inc. Headquarters (USHQ)

📍 BAE Systems, Inc. United States Headquarters

2941 Fairview Park Drive

22042

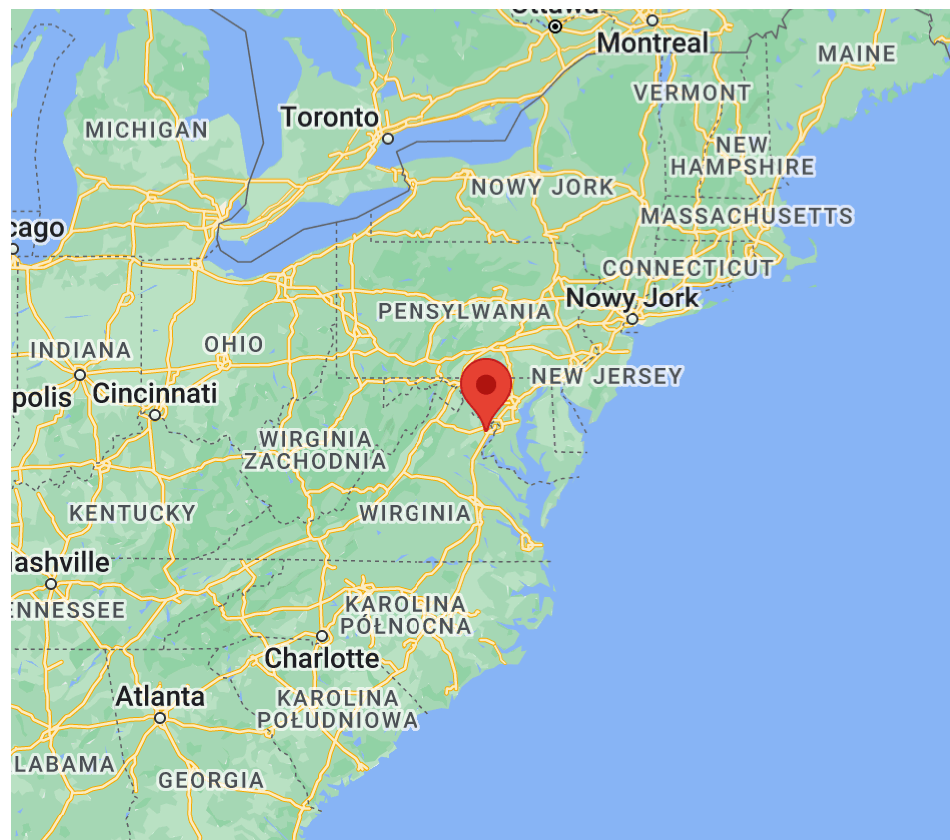
Falls Church, Virginia

United States of America

+1 571 461 6000

baesystemsinfo@baesystems.com

Directions →



BAE SYSTEMS

1,318.00 GBX

[Go to investor center](#)

Data is from the London Stock Exchange and may be delayed by 15 minutes or more.

Share price data collected at 12:18 PM BST, 16 Apr 2024.

WHAT WE DO

[Products & Services](#)

[Sustainability](#)

[Investors](#)

OUR COMPANY

[BAE Systems, Inc.](#)

[United States](#)

[Suppliers](#)

[Suppliers](#)

[Our locations](#)

[Inc. DEI Impact](#)

[Report](#)

NEWSROOM

[Features](#)

[News](#)

[Events](#)

CAREERS

[Explore US-based careers](#)

[Explore jobs globally](#)



[Accessibility](#)

[Terms & Conditions](#)

[Privacy](#)

[Sitemap](#)

[Manage My Choices](#)

Copyright © 2023 BAE Systems. All rights reserved